

DATASHEET – ALM1815



An extrusion profile with multiple lens options. Standard Domed, 30 degree, and flat lenses allow for different viewing angles and output beam angles. The curved lens (or domed lens) is one of our original aluminum extrusions and has been very popular since we first started manufacturing them. Interior dimensions allow for FlexLED strips up to 13MM in width. Made from high quality aviation 6063-T5 aluminum alloy with double-anodized. Covers are made from polycarbonate and are certified for excellent resistance to all weather conditions, UV radiation, as well as being non-combustible. Polypropylene (or steel) end caps and steel mounting brackets (finished in zinc or chrome) or plastic brackets are optional. Custom finishes and colours for the channel base, end caps, and clips are available.

SPECIFICATIONS

Product Type	ALM1815 – DOMED LENS	ALM1815B – 30 DEGREE LENS	ALM1815F – FLAT LENS
Product Code	ALM1815	ALM1815B	ALM1815
Channel Base Material	6063-T5 Aluminum	6063-T5 Aluminum	6063-T5 Aluminum
Channel Cover Material	Polycarbonate (PC)	Polycarbonate (PC)	Polycarbonate (PC)
End Cap Material	Polypropylene (PP)	Polypropylene (PP)	Polypropylene (PP)
Mounting Bracket Material	Steel or Plastic	Steel or Plastic	Steel or Plastic
Operating Temperature	-30°C ~ 100°C	-30°C ~ 100°C	-30°C ~ 100°C
Flammability	V2 Fire Rating for PC Cover	V2 Fire Rating for PC Cover	V2 Fire Rating for PC Cover
UV Stability	Aging Resistance 3+ Years	Aging Resistance 3+ Years	Aging Resistance 3+ Years
UL94 Rating	UL94V2	UL94V2	UL94V2
Manufacturing Tolerances (MM)	±0.5	±0.5	±0.5
Lighting Transmittance	94%	94%	94%
Wattage Dissipation	28W/meter	28W/meter	28W/meter
Interior Channel Width (MM)	12.2	12.2	12.2

HANDLING INSTRUCTIONS & NOTES

- Observe proper anti-static handling at all times
- Installation surfaces should be smooth, clean, and dry
- FlexLED tape cannot be affixed to sharp objects
- Do not crush or bend FlexLED tape
- FlexLED tape can only be cut on cut lines
- For any questions or concerns please consult our website or contact us directly

Moss LED Inc. reserves the right to change details of the product without notice.

ALUMINUM EXTRUSION SKU BUILDER

ALM	1815(B)	C30	1M	S
I	I	I	I	I
1	2	3	4	5
Series	Extrusion Type	Lens Type	Length	Mounting Style

1 Series

ALM

2 Extrusion Type

1815(B)

4 Length

1M	1 Meter
2M	2 Meter
2.44M	2.44 Meter
3M	3 Meter
XX	Custom 0.1 -> 3.0

3 Cover Style

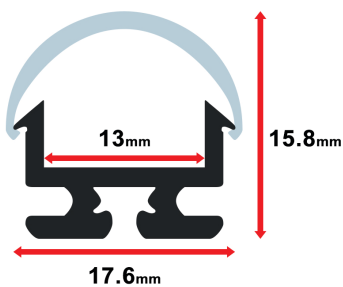
C30	30 Degree Clear Lens
D30	30 Degree Diffused Lens
M30	30 Degree Milky Lens
M	Standard Milky
MD	Standard Diffused
MC	Standard Clear
FC	Flat Lens Clear
FD	Flat Lens Diffused
FM	Flat Lens Milky

5 Mounting Style

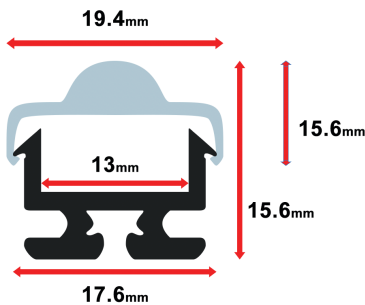
S	Surface Mount Clips
SR	Surface Mount Rotating Clips



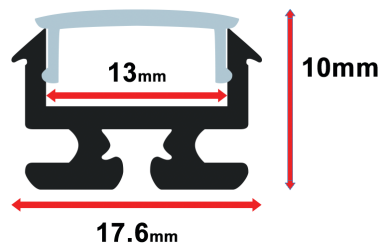
ALM-1815 WITH STANDARD LENS



ALM-1815B WITH 30 DEGREE LENS

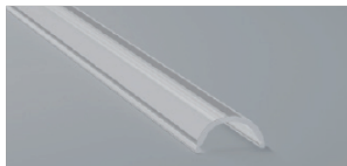


ALM-1815B WITH FLAT LENS

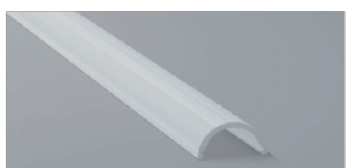


Lens Options

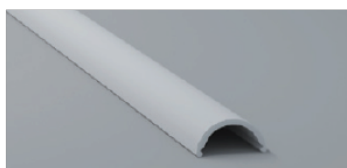
Standard Lens



Clear (Standard)



Diffused (Optional)

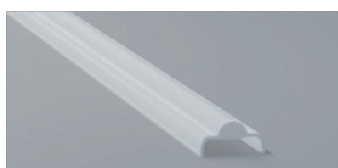


Milky (Optional)

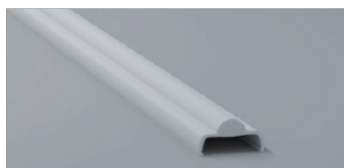
30 Degree Lens



Clear (Standard)

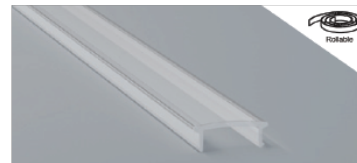


Diffused (Optional)



Milky (Optional)

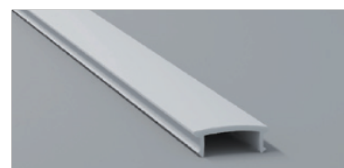
Flat Lens



Clear (Standard)

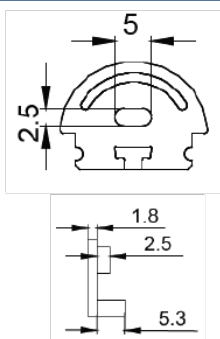


Diffused (Optional)



Milky (Optional)

End Cap Specifications



Standard End Caps
ALM1815_ECC
ALM1815_ECWH



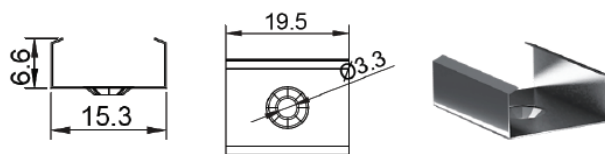
Flat End Caps
ALM1815F_ECC
ALM1815F_ECWH



30 Degree End Caps
ALM1815B_ECC
ALM1815B_ECWH

Mounting Clips

Surface Mount - Standard
Product Ordering Code: ALM1815B_CLP



Surface Mount - Rotating
Product Ordering Codes: ALM1707F-CLP-R

