

Aluminum Channel MOSS-ALSST6114FM2.44M

Designed to be inlaid into a drywall surface, this channel provides a gorgeous seamless linear light with a 20MM (0.787") lens.

This channel is completely flexible in any direction, as well as the 100% silicone cover.

At only 10MM in depth this channel is designed to be recessed into 1/2" drywall and still sit in front of any existing studs. The depth makes this channel the perfect choice for retrofits or installing after the drywall has already been installed.

The convenient 'wings' allow the channel to be screwed in from the front and then mudded in to create a seamless look.

At this narrow depth of channel we recommend using our SoftFLEX (COB) series of LED or another high-density LED.

Beautifully Crafted Aluminum Channel for our FlexLED Strips
Standard 2.44 Meter Lengths (Available in 0.5 - 3 Meter Lengths)
(1) Cover, and (1) Channel are included - no end caps or clips required
Milky covering - silicone material for full flexibility
Dimensions: MM
*LED FlexLED tape not included *No Clips or Hangers

TECHNICAL SPECIFICATIONS

1	PRODUCT TYPE	Aluminum Channel
2	PRODUCT CODE	ALSST6114FM2.44M
3	CHANNEL BASE MATERIAL	ALUMINUM - 6063-T5
4	CHANNEL COVER MATERIAL	Silicone
5	END CAP MATERIAL	N/A
6	MOUNTING BRACKET MATERIAL	N/A
7	OPERATING TEMPERATURE	-30°C ~ 100°C
8	FLAMMABILITY	HB Fire Rating for Silicone Cover Diffuser
9	UV STABILITY	3+ Years
10	UL94 RATING	N/A
11	MANUFACTURING TOLERANCES (MM)	±0.5
12	LIGHTING TRANSMITTANCE	50%
13	WATTAGE DISSIPATION	28W/METER
14	INTERIOR CHANNEL WIDTH (MM)	20.7

HANDLING INSTRUCTIONS & NOTES

- Installation surfaces should be smooth, clean, and dry.
- For any questions or concerns please consult our website or contact us directly.
- Cover can be cut with scissors or any sharp blade
- Aluminum channel should be cut with circular saw utilising an blade designed for cutting aluminum materials

Moss LED Inc. reserves the right to change details of the product without notice.

PRODUCT FEATURES

The extrusion is machined to be FLEXIBLE and can bend in any direction. The silicone cover is also bendable in any direction. The standard silicone cover diffuser can be ordered in lengths as long as 50 meters (164 feet)

Minimum bending radius for up & down bending direction = 150mm

Minimum bending radius for left & right bending direction = 200mm



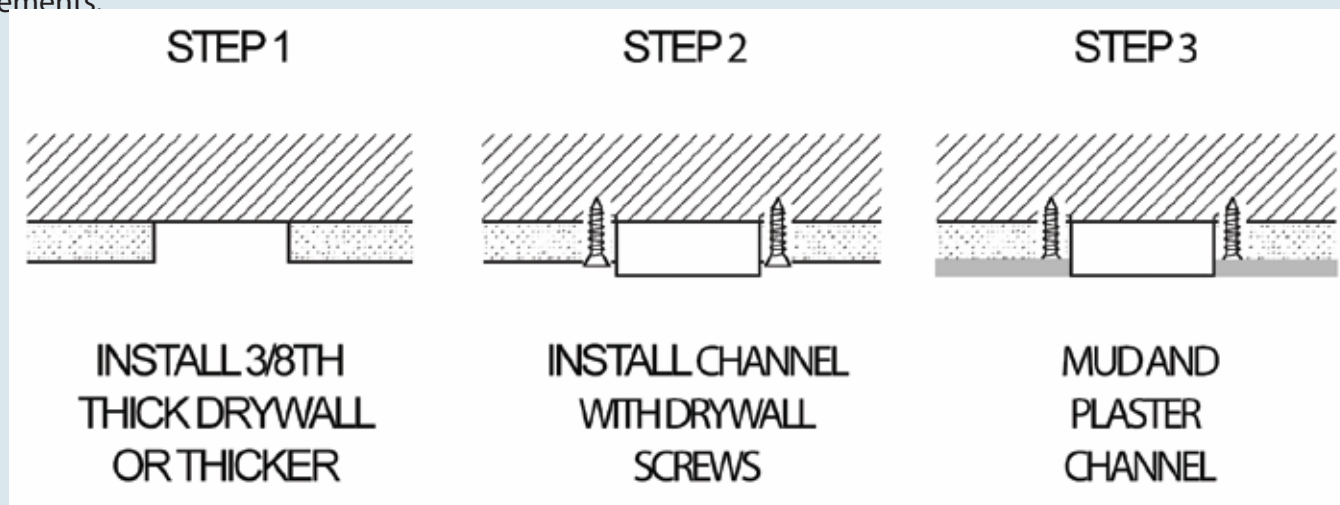
Silicone Diffuser



Aluminum Channel

INSTALLATION INSTRUCTIONS

The extrusion with LED light source is mostly used as Embedded Ceiling Lighting. The extrusion is installed in drywall using a suitable mounting adhesive or mounting screws. You should apply a thin layer of adhesive to the flange of the extrusion and apply the drywall mesh, seal with filler, and when dry, sand and paint it. As a result, we get a line of light in the planes of walls and ceilings without visible aluminum elements.



ALUMINUM EXTRUSION SKU BUILDER

ALSST

1
Series

6114F

2
Extrusion Type

M

3
Lens Type

2.44M

4
Length

1 Series
ALSST

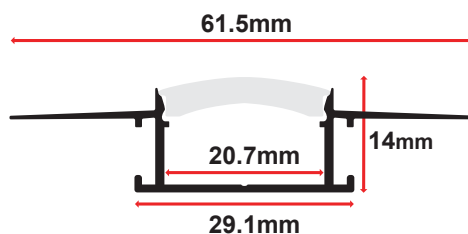
2 Extrusion Type
6114F

3 Cover Type
M Milky

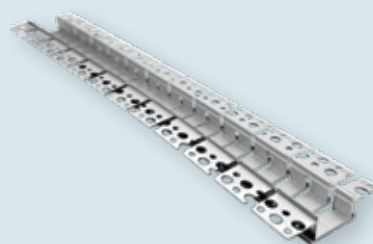
4 Length

2.44M 2.44 Meters (8 Feet)
Custom Lengths Available

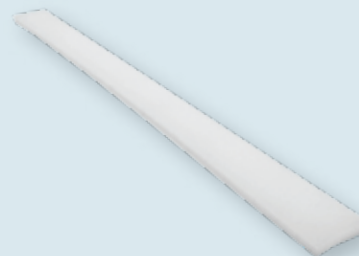
ALSST6114FM2.44M



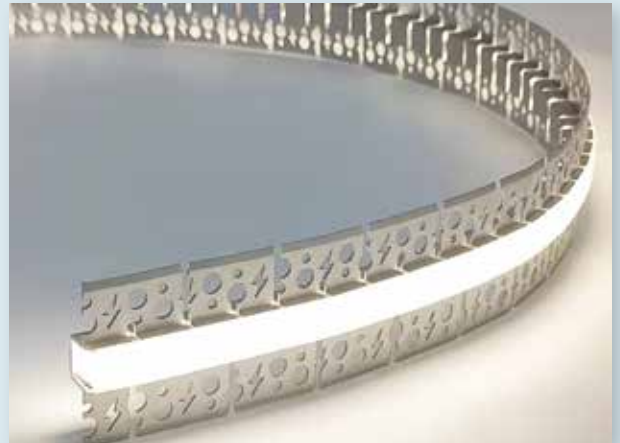
SKU: ALSST6114F_2.44M_CO
MOSS-ALSST-6114 Flexible Channel Only - 2.44 Meter
Custom Lengths Available



SKU: ALSST6114F_M2.44M
MOSS-ALSST-6114 Flexible Cover Only - Milky - 2.44 Meter
Custom Lengths Available (up to 50 meters - 162 feet)



BENDING DIRECTION



Applications

