

Aluminum Channel MOSS-ALM-2310

Premium Aluminum Channel – Durable, Versatile Mounting for FlexLED Strips

The premium aluminum channel provides a sleek and durable housing solution for FlexLED strips, ensuring professional-grade installations in residential, commercial, and industrial applications. One of our most popular channels as it is low profile with a PMMA lens that diffuses light very uniformly. Available in standard 2.44-meter (8-foot) lengths, but can be customized to any length, this channel enhances heat dissipation, longevity, and provides protection from the elements to LED strips.

Key Features:

- High-Quality Aluminum – Provides durability and optimal heat dissipation.
- Compatible with FlexLED Strips – Designed for seamless integration with all Moss LED FlexLED Tape.
- Multiple Length Options – Cut to desired length to fit any project.
- Includes Accessories – Comes with two mounting clips, one cover, and one base plus one end cap with hole and one end cap closed per 2.44 meter length (8 foot)
- Milky Diffused Lens or Clear Lens – Ensures smooth, even light diffusion.
- Compact Design – 23mm x 10mm profile for low-profile applications.

LED tape not included.

Need a custom solution? Contact us today!

TECHNICAL SPECIFICATIONS

1	PRODUCT TYPE	MOSS-ALM-2310
2	PRODUCT CODE	ALM2310P2.44MS
3	CHANNEL BASE MATERIAL	6063-T5 Aluminum
4	CHANNEL COVER MATERIAL	PMMA Milky Lens or PolyCarbonate for Clear Lens
5	END CAP MATERIAL	POLYPROPYLENE (PP)
6	MOUNTING BRACKET MATERIAL	CLEAR PLASTIC
7	OPERATING TEMPERATURE	-30°C ~ 100°C
8	FLAMMABILITY	V2 FIRE RATING FOR PC COVER
9	UV STABILITY	AGING RESISTANCE 3+ YEARS
10	UL94 RATING	UL94V2
11	MANUFACTURING TOLERANCES (MM)	±0.5
12	LIGHTING TRANSMITTANCE	86% for PMMA or 94% for clear
13	WATTAGE DISSIPATION	28W/METER
14	INTERIOR CHANNEL WIDTH (MM)	18

HANDLING INSTRUCTIONS & NOTES

- Observe proper anti-static handling at all times.
- Installation surfaces should be smooth, clean, and dry.
- FlexLED tape cannot be affixed to sharp objects.
- Do not crush or bend FlexLED tape.
- FlexLED tape can only be cut on cut lines.
- For any questions or concerns please consult our website or contact us directly.

Moss LED Inc. reserves the right to change details of the product without notice.

ALUMINUM EXTRUSION SKU BUILDER

ALM	2310	P	2.44M	S
I 1	I 2	I 3	I 4	I 5
Series	Extrusion Type	Lens Type	Length	Mounting Style

1	Series	2	Extrusion Type	3	Cover Type
ALM	Aluminum Housing	2310	23MM X 10MM	C	Clear
				P	PMMA Milky

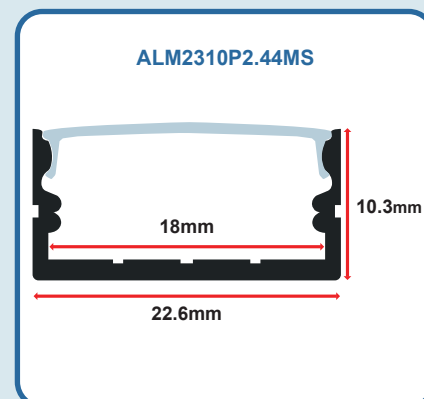
4 Length	5 Mounting Style
2.44M 2.44 Meters (8 Feet) Custom Lengths Available	S Surface Mounting Clips R Rotating Clips

Aluminum Channel and Cover

SKU: ALM2310_2.44M_CO
Aluminum Channel Base - 2.44 Meter

SKU: ALM2310_C2.44M
MOSS-ALM-2310 Cover Only - Clear - 2.44 Meter

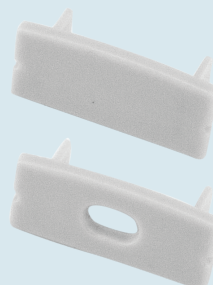
SKU: ALM2310_P2.44M
MOSS-ALM-2310 Cover Only - PMMA Milky - 2.44 Meter



End Caps

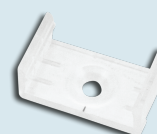
SKU: ALM2310_ECC
MOSS-ALM-2310 End Cap - Closed

SKU: ALM2310_ECWH
MOSS-ALM-2310 End Cap - With Hole



Mounting Clip

SKU: ALM2310_CLP
MOSS-ALM-2310 Mounting Clip



Rotating Clip

SKU: ALM2310_RCLP
MOSS-ALM-2310 Rotating Clip

