

Aluminum Channel MOSS-ALLL-2525-C



A gorgeous hanging chandelier luminaire channel that accommodates any of our FlexLED strips up to 14MM in width. FlexLED strip is sold separately.

FlexLED Required for each size:

600MM = 1.88 Meters (74")

900MM = 2.82 Meters (111")

1270MM = 3.99 Meters (157")

1800MM = 5.65 Meters (222")

Beautifully Crafted Aluminum Channel for our FlexLED Strips
Standard diameters 600mm (23.62"), 900mm (35.43"), 1270mm (50"), 1800mm (70.87")

Milky Cover

Aircraft cable for hanging X 3

Milky Cover

Dimensions: MM

*LED FlexLED tape not included

Indoor Use Only

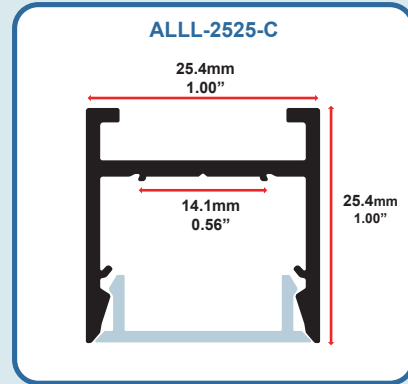
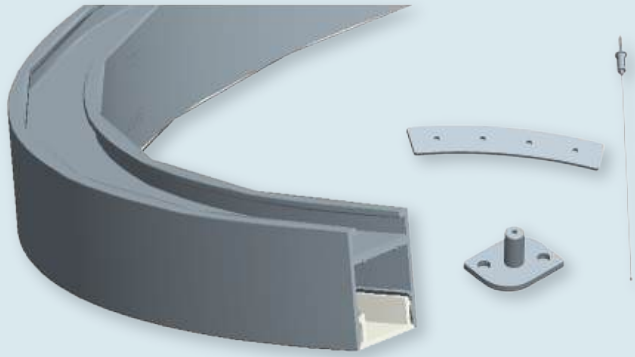
TECHNICAL SPECIFICATIONS

1	PRODUCT TYPE	MOSS-ALLL-2525-C
2	PRODUCT CODE	ALLL
3	ALUMINUM PROFILE	6065-T5
4	DIFFUSER	PC DIFFUSED COVER
5	DIAMETER	600 / 900 / 1200 / 1800mm
6	WEIGHTL	0.458Kg/M
7	MAX STRIP WIDTH	12MM
8	MAX POWER	20W/M
9	BEAM ANGLE	100°
10	FINISH	SILVER /BLACK ANODIZED, POWDER COATED WHITE / BLACK OR OTHER COLORS
11	INSTALLATION	PENDANT

HANDLING INSTRUCTIONS & NOTES

- Observe proper anti-static handling at all times.
- Installation surfaces should be smooth, clean, and dry.
- FlexLED tape cannot be affixed to sharp objects.
- Do not crush or bend FlexLED tape.
- FlexLED tape can only be cut on cut lines.
- For any questions or concerns please consult our website or contact us directly.
- Indoor use only

Moss LED Inc. reserves the right to change details of the product without notice.



ALUMINUM EXTRUSION SKU BUILDER

ALLL	2525	C	MXXXX	HB
 1	 2	 3	 4	 5
Series	Extrusion Dimensions	Style	Length	Mounting Style

1 Series

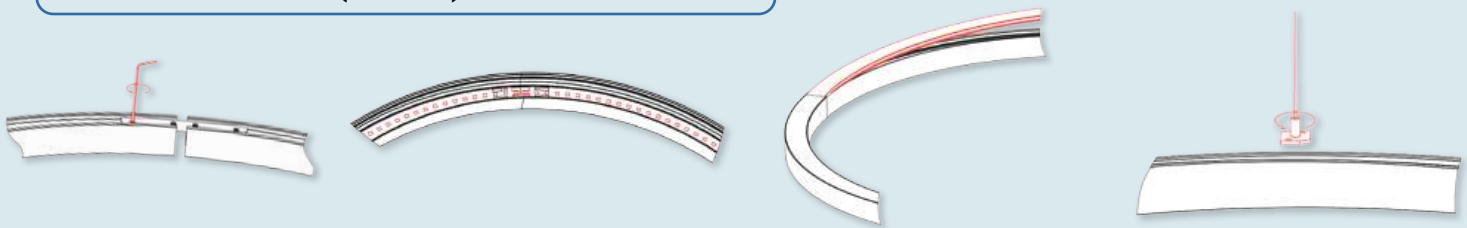
2 Extrusion Dims
2525 2525MM

3 Style
C Circle

4 Diameter

600	600MM (23.62")
900	900MM (35.43")
1270	1270MM (50")
1800	1800MM (70.87")

5 Mounting Style
HB Hanging Bracket

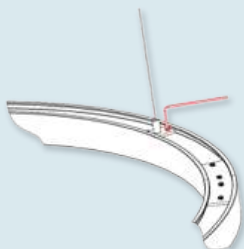


1. Secure the profile using an allen key and connector plate.

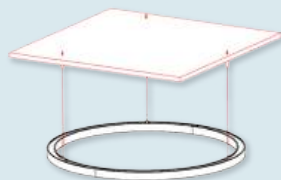
2. Install the FlexLED strip inside the profile.

3. Install the diffuser.

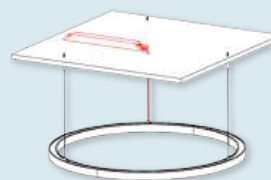
4. Move the slider to a suitable position.



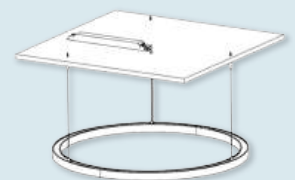
5. Lock the slider using an allen key.



6. Hang the circle by the aircraft cable.



7. Install the LED driver.



8. Installation complete.